

# Cable Accessories for Microinverter of HMS Series



## AC Trunk Cable, 12/10 AWG Cable

AC Trunk Cable is used to connect the microinverter to distribution box.

The Trunk Connector on the AC Trunk Cable is evenly distributed at intervals, Hoy miles provides AC Trunk Cable with different AC Trunk Connector spacing.



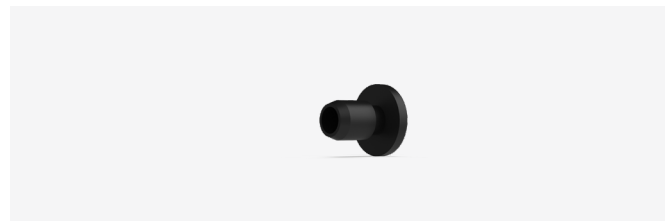
## AC Trunk Connector

The AC Sub Connector of the microinverter can be inserted into the port of the AC Trunk Connector. Plug and play connectors speed up and simplify installation.



## AC Trunk Port Cap

Used to protect vacant AC Trunk Port.



## AC Trunk End Cap

Used to protect the cable port of AC Trunk Connector at the end of the AC branch.



## AC Trunk Port Disconnect Tool

Used to disconnect the connection between the microinverter and the AC Trunk Connector.



## AC Trunk Connector Unlock Tool

Used to unlock the AC Trunk Connector upper cover so that the cable can be removed, replaced, and the AC Trunk End Cap installed.



## DC Extension Cable

Connect the microinverter and the PV module when the distance between this two exceeds the original cable length.

# Technical Specifications

Model		AC Trunk Cable
<b>Main Parameters</b>		
Cable type	10 AWG	
Rated voltage		600 V
Cable outer diameter	12.5±0.40 mm	
Ambient temperature range		-40°C to +90°C
AC Trunk Connector spacing	4.2 m/2 m	
Number of AC Trunk Connectors per Single AC Trunk Cable	10/20	
Single AC Trunk Cable length	39.3 m/41 m	
<b>Compliance</b>		
Product standard		UL 44, UL 1277, UL 1581
RoHS compliant		Yes

Model		AC Trunk Connector
<b>Main Parameters</b>		
Pin number		2P+PE
Rated current		32 A ( Use 10 AWG/6mm <sup>2</sup> copper cable)
Rated voltage		300 V
Contact resistance		≤5 mΩ
Power frequency withstand voltage		1500V AC
Over voltage type		III
<b>Connection Parameter</b>		
Applicable cable specification		12/10 AWG
Applicable cable outer diameter		10 mm to 13 mm
Cable connection type		Screw pressing
Sub connector connection type		Crimping
<b>Mechanical Data</b>		
Ambient temperature range		-40°C to +85°C
Dimensions (L × W × H mm)		150 × 40 × 110
Protection rating		IP68
Flame resistance degree		UL 94-V0
<b>Compliance</b>		
Product standard		PPP 59015A:2013 ANSI/UL 6703-2017
RoHS compliant		Yes

Model		DC Extension Cable
<b>Cable</b>		
Cable type		PV1-F 1X4
Rated current		20 A
Rated voltage		Max.1800V DC
Cable length		1 m
Ambient temperature range		-40°C to +90°C
Product standard		2 PFG 1169/08.2007
<b>DC Connector</b>		
Manufacturer		Betteri
Type		BC03A, BC03B
Rated current		30 A
Rated voltage		1000 V DC (TUV), 600/1000 V DC (CSA)
Rated impulse withstand voltage		6000 V
Over voltage category		III
Ambient temperature range		-40°C to +85°C
Protection rating		IP67
Flame resistance degree		UL 94-V0
Product standard		EN 62852:2014 UL 6703
RoHS compliant		Yes

## Ordering Information

### AC (Daisy Chain) Accessories

Type	Model	Description
AC Trunk Cable	AC Trunk Cable_40T_40L_12AWG-1m	40 AC Trunks and 40 AC Cables (Per Cable Length 1m, 12AWG)
	AC Trunk Cable_20T_20L_10AWG-2m	20 AC Trunks and 20 AC Cables (Per Cable Length 2m, 10AWG)
	AC Trunk Cable_10T_10L_10AWG-4.2m	10 AC Trunks and 10 AC Cables (Per Cable Length 4.2m, 10AWG)
AC Trunk Port Disconnect Tool	AC Trunk Port Disconnect Tool	1 AC Trunk Port Disconnect Tool
AC Trunk Port Cap	AC Trunk Port Cap	1 AC Trunk Port Cap
AC Trunk Connector Unlock Tool	AC Trunk Connector Unlock Tool	1 AC Trunk Connector Unlock Tool
AC Trunk End Cap	AC Trunk End Cap	1 AC Trunk End Cap

### DC Accessories

Type	Model	Description
DC Connector-F	BC03A-F-C24	1 DC Female Connector (Betteri)
DC Connector-M	BC03A-M-C24	1 DC Male Connector (Betteri)
DC Connector Unlock Tool	MC4_Con_Unlock	1 DC Connector Disconnect Tool
DC Extension Cable	DC_Ext_Cable-1m	1 DC Male Connector (Betteri), 1 DC Cable (Cable Length 1m, 12AWG) and 1 DC Female Connector (Betteri)